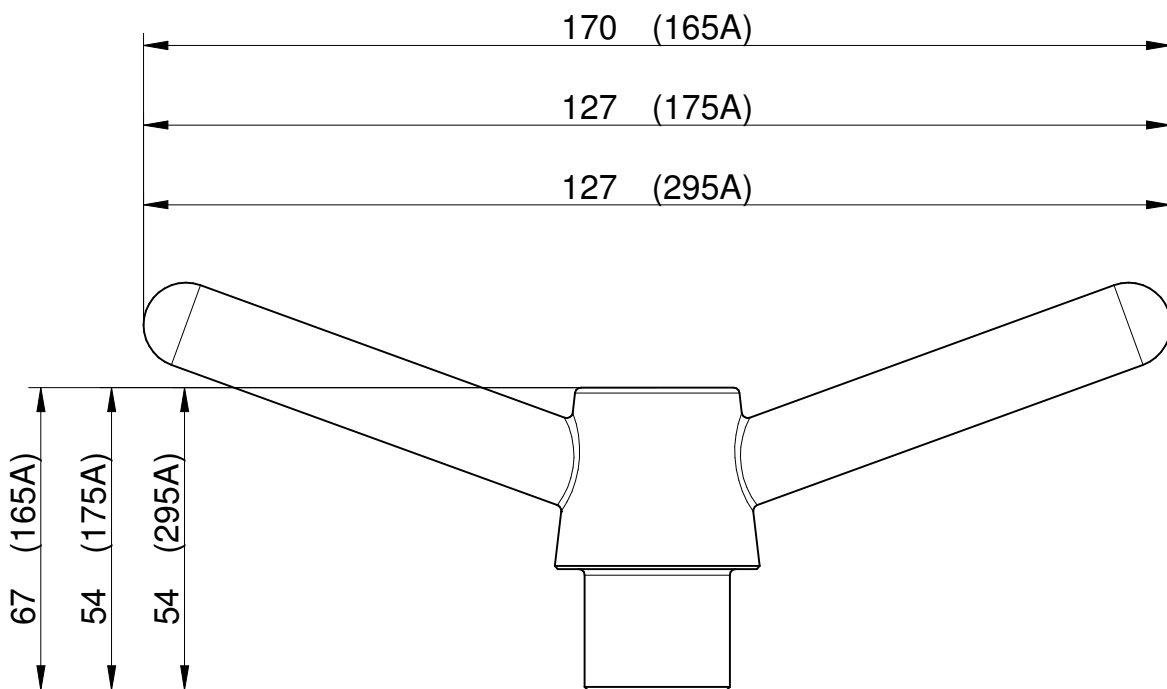




Acciaio inox AISI 304, filettatura in ottone
M10 (V/I/295A), M14(V/I/Z/175A), M16(V/I/165A)
Stainless steel AISI 304, brass thread
M10 (V/I/295A), M14(V/I/Z/175A), M16(V/I/165A)



M10 V/I/295A), M14(V/I/Z/175A), M16(V/I/165A)

