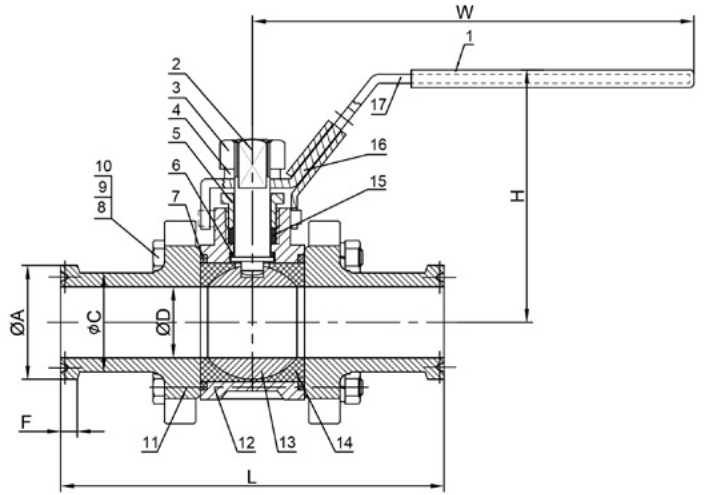


## 3-Pce Full Bore Hygienic/Sanitary Cavity Filled Ball Valve with Clamp Ferrule Ends

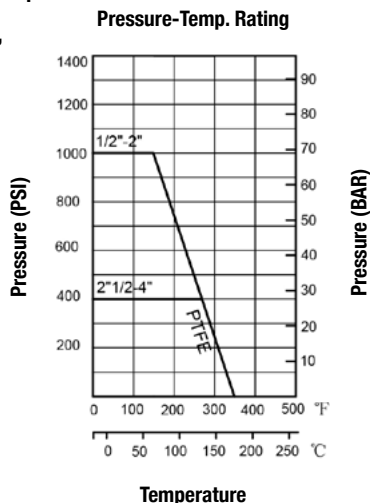


- ASTM A351 CF8M 316 Stainless Steel body construction.
- CF3M 316L Clamp Ends to BS4825, 316 Trim.
- -20 / +180 Deg C Temperature rated.
- PTFE (FDA approved) Cavity Filled Ball Seats and Seals.
- Manual Lever Operated with Locking Device.
- 1000 psi/g pressure rated (2-1/2" - 3" size is 400 psi/g pressure rated).
- Chemically polished external surface, Mechanical polish Ra 32 / 0.8um Internal.
- Certified as being non-Bovine and TSE (Transmissible Spongiform Encephalopathy) Free for all manufacturing and packaging processes.

**Mating Union Parts and Seals available from stock**  
**Standard seat material is FDA certified**  
**Design Rating: MSS SP-110, BS4825**

**Inspection & Testing: API 598 / EN 12266-1**  
**End connections: BS4825 Clamp**

**Available size range: 1/2" - 3"**



Item	Part	Material	Qty.
1	Hand Sleeve	PLASTIC	1
2	Stem	316	1
3	Stem Nut	304	1
4	Spring Washer	304	1
5	Gland Nut	304	1
6	Thrust Washer	PTFE	1
7	Seal	PTFE	2
8	Bolt	304	4-6
9	Bolt Washer	304	4-6
10	Bolt Nut	304	4-6
11	End Cap	CF3M	2
12	Body	CF8M	1
13	Ball	316	1
14	Ball Seat	PTFE	2
15	Stem Packing	PTFE	1
16	Locking Device	304	1
17	Handle	304	1

SIZE	A	C	D	F	L	H	W
1/2"	25.4	12.7	9.4	3.7	85.3	56.5	108.5
3/4"	25.4	19.05	15.75	3.7	90	62.2	108.5
1"	50.5	25.4	22.1	2.85	114	70.5	130.5
1-1/2"	50.5	38.1	34.8	2.85	138	92	162.5
2"	64	50.8	47.4	2.85	138	101	162.5
2-1/2"	77.5	63.5	60.3	2.85	190	129	247
3"	91	76.2	73	2.85	220	138.5	247