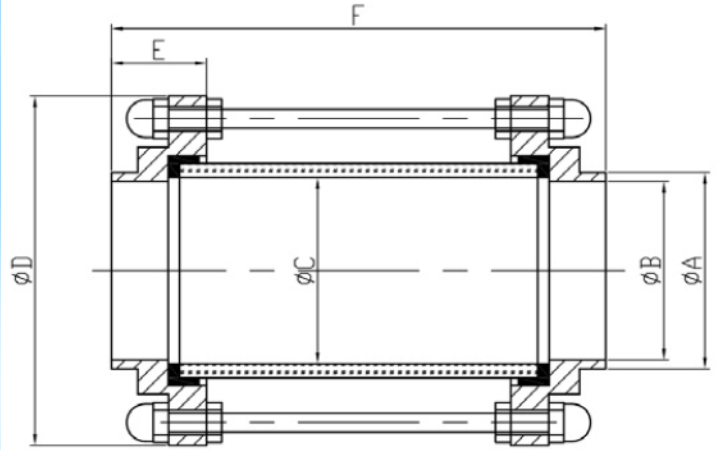


Hygienic Tubular Sight Glass Plain Weld Ends



- F316L Stainless Steel Construction.
- FDA Food Grade EPDM Seals fitted as standard.
- Borosilicate Tempered Glass. S/S Glass Protector sleeve.
- 115 psi (8 bar/g) pressure rated.
- -10 to +120 deg C max Temp.
- Plain Weld Ends to weld directly onto Imperial O/D BS4825 Tubing.

Item	Part	Material	Qty.
1	End Cap	F316L	2
2	Glass	Borosilicate	1
3	Guard	304	1
4	Seal	EPDM	2
5	Rod	304	4
6	Nut	304	8

A good all round, robust general purpose Hygienic Inline Sight Glass. Compact and robust design.

Other connections such as RJT, Clamp, SMS, IDF and DIN available to order.

Spare glasses held in stock.

PTFE Seal conforms to FDA 177.2600 standards. 0.8 Ra Polish on internals.

3.1 Material Certificates available upon request.

Available size range: 1" to 4" in stock

SIZE	A	B	C	D	E	F±1
1"	25.4	22.1	24	79	23.5	130
1-1/2"	38.1	34.8	35	85	23.5	128
2"	50.8	47.5	50	100	26	133
2-1/2"	63.5	60.2	65	115	27	131
3"	76.2	72.9	75	127	28	134
4"	101.6	97.6	100	156	30	135