

Flanged Pattern Gate Valve DIN PN16

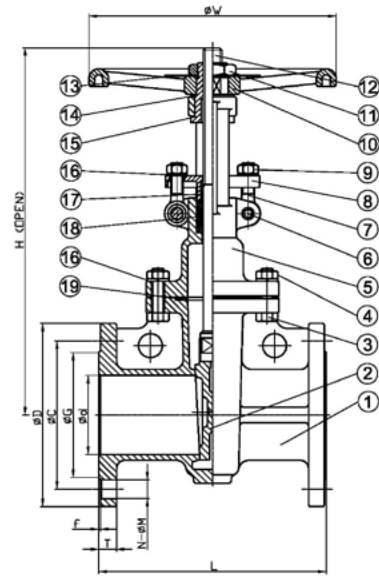


- ASTM A351 CF8M 316 Stainless Steel Body, Bonnet and Wedge.
- 316 Stainless Steel Stem and Trim. Ductile Iron painted Handwheel.
- PTFE Gland Packing and Bonnet Seal. Bronze Bush.
- Bolted Bonnet, Outside Screw and Yoke. Rising Stem. Solid Wedge.
- Face to Face dimensions in accordance with DIN 3202/F1.
- 16 bar/g pressure rated.
- -20 / +180 deg C Temp rated.
- Flanged DIN PN10/16 end connections.
- CE Marked in accordance with the PED 2014/68/EU (from 1.1/4").

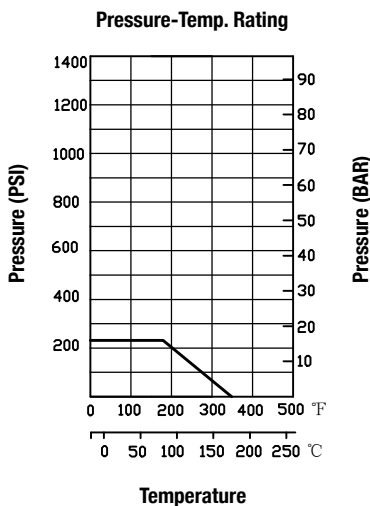
Design Standard – ANSI B16.34

Test Standard – API 598

Available size range: 1/2" - 8"



Item	Part	Material	Qty.
1	Body	CF8M	1
2	Disc	CF8M	1
3	Bonnet Bolt	SUS304	1
4	Bonnet Nut	SUS304	1
5	Bonnet	CF8M	1
6	Hinge Pin	SUS304	1
7	Eye Bolt	SUS304	1
8	Gland	CF8	1
9	Eye Nut	SUS304	1
10	Hand Wheel	FCD400	1
11	Nut	BRONZE	1
12	Stem	SUS316	1
13	Name Plate	SUS304	1
14	Spring	BRONZE	1
15	Yoke Sleeve	BRONZE	1
16	Spring Washers	SUS304	1
17	Gland Packing	PTFE	1
18	Packing	PTFE	1
19	Gasket	PTFE	



SIZE	d	L	H	W	D	C	G	f	T	N-øM
1/2"	15	130	182	120	95	65	45	2	14	4-ø14
3/4"	20	150	195	120	105	75	58	2	16	4-ø14
1"	25	160	237	120	115	85	68	2	16	4-ø14
1-1/4"	32	180	294	200	140	100	78	2	16	4-ø18
1-1/2"	40	200	294	200	150	110	88	3	16	4-ø18
2"	50	230	335	200	165	125	102	3	18	4-ø18
2-1/2"	65	290	393	200	185	145	122	3	18	4-ø18
3"	80	310	467	250	200	160	138	3	20	8-ø18
4"	100	350	549	250	220	180	158	3	20	8-ø18
5"	125	400	630	300	250	210	188	3	22	8-ø18
6"	150	480	743	300	285	240	212	3	22	8-ø22
8"	200	600	910	350	340	295	268	3	24	12-ø22