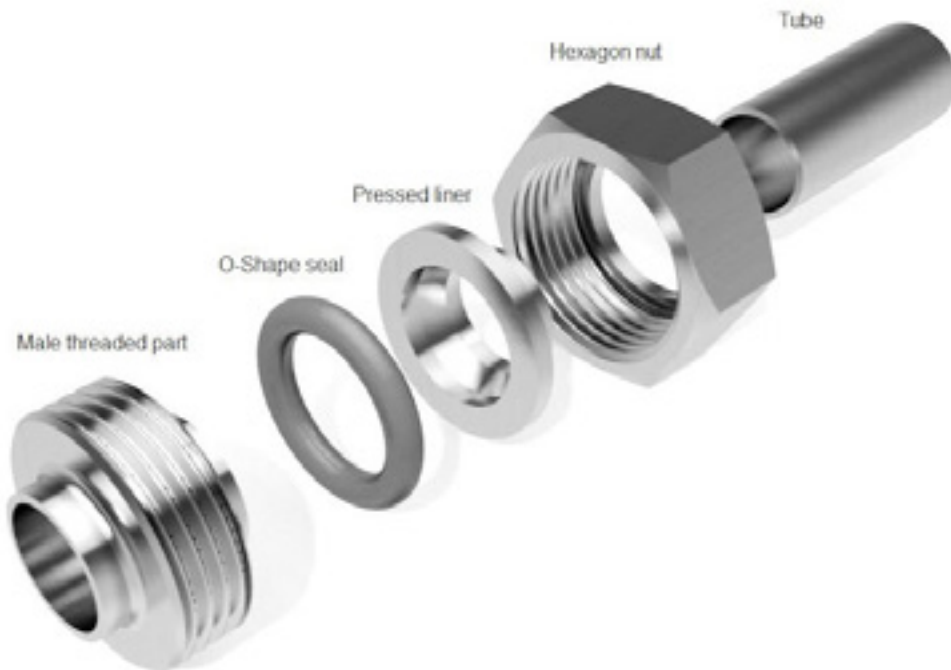




Stainless Steel RJT Hygienic Unions

Introduction



RJT Unions (Ring Joint Type) are the most popular type of Hygienic Union used in the UK and are often referred to as the standard union for hygienic applications.

They are manufactured to BS 4825 part 5 and consist of a hexagon nut, a male part, a pressed weld liner and an O-Ring Seal.

The O-Ring style seal is available in a range of materials (Nitrile, Viton and EPDM are held in stock, other materials available on special order).

The Seal leaves a small crevice where the liner and male part overlap.

RJT unions are often preferred for use with frequently dismantled sections of pipework, especially in Breweries.

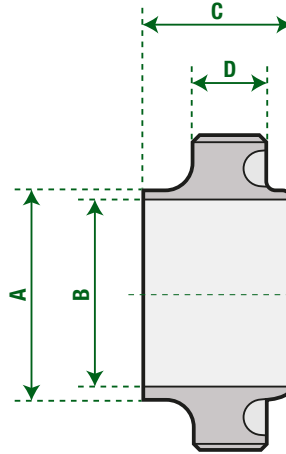
They are rated at 10 Bar/g pressure.

The Nut is usually made from 304 Stainless Steel (non-contact) whilst the Male and Liner are 316L Stainless Steel.

The standard size range is 1" - 4" to suit Imperial Hygienic Tube.

RJT-01

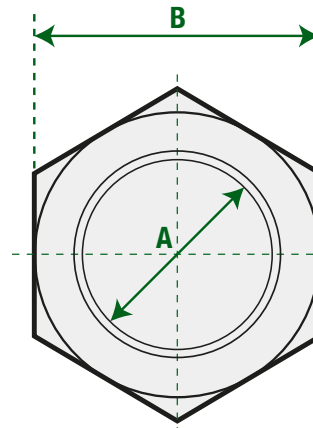
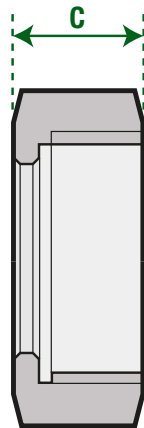
RJT Weld Male



Tube OD	A	B	C	D
1"	25.65	22.2	26.3	14.3
1-1/2"	38.35	34.9	26.3	14.3
2"	51.05	47.6	26.3	14.3
2-1/2"	63.75	60.3	26.3	14.3
3"	76.45	73	26.3	14.3
4"	101.85	97.6	26.3	14.3
6"	152.4	146.9	24	14.3

RJT-02

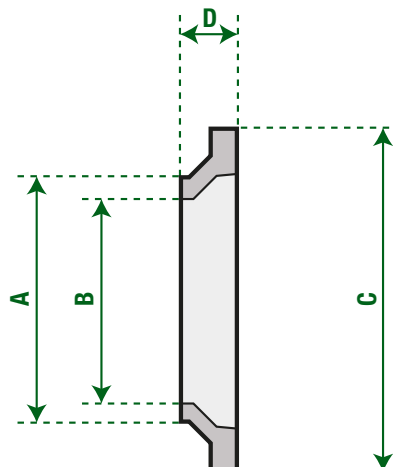
RJT Hexagon Nut



Tube OD	A	B	C
1"	33.3	50.8	22.2
1-1/2"	46	65	22.2
2"	58.7	79.4	22.2
2-1/2"	71.4	62.1	22.2
3"	84.1	104.8	22.2
4"	109.5	130.2	22.2
6"	163	184	24

RJT-03

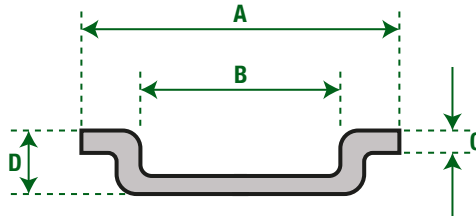
RJT Pressed Weld Liner



Tube OD	A	B	C	D
1"	25.7	22.2	41.3	12.7
1-1/2"	38.4	34.9	54	12.7
2"	51.1	47.6	66.7	12.7
2-1/2"	63.8	60.3	79.4	12.7
3"	76.5	73	92.1	12.7
4"	101.9	97.6	117.5	12.7
6"	152.4	146.9	169.1	23.5

RJT-04

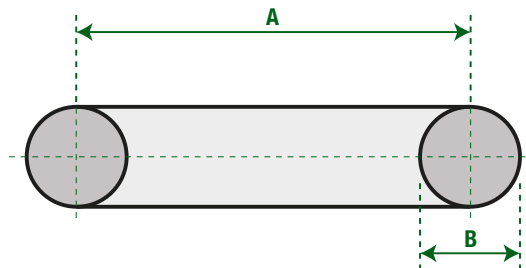
RJT Pressed Blank Liner



Tube OD	A	B	C	D
1"	41.3	25.4	2	8.3
1-1/2"	54	38.1	2	8.3
2"	66.7	50.8	2	8.3
2-1/2"	79.4	63.5	2	8.3
3"	92.1	76.2	2	8.3
4"	117.4	101.6	2	8.3

RJT-05

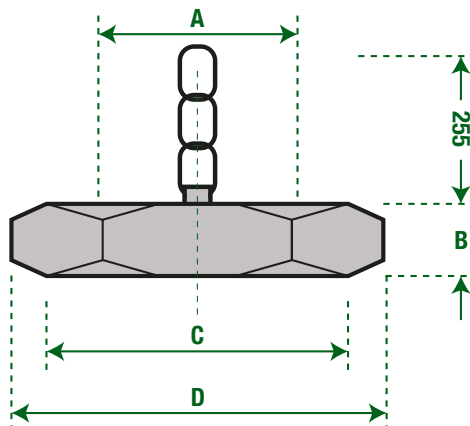
RJT O-Ring Joint



Tube OD	A	B
1"	33.3	6.6
1-1/2"	46	6.6
2"	58.7	6.6
2-1/2"	71.4	6.6
3"	84.1	6.6
4"	109.5	6.6

RJT-06

RJT Blank Nut & Chain



SIZE	DIM B	DIM C	DIM D
1"	22	51	58
1-1/2"	22	65	74
2"	22	79	90
2-1/2"	22	92	104
3"	22	105	120
4"	22	130	150