

Flanged Pattern Gate Valve ANSI 150

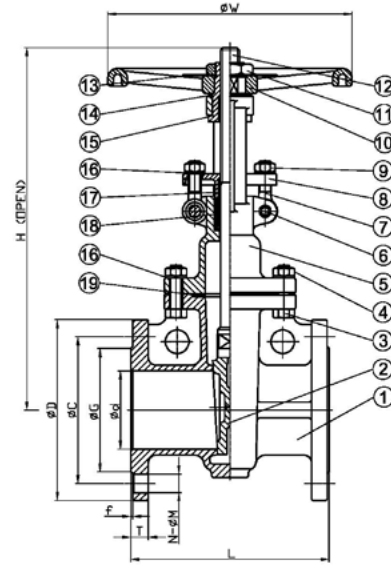
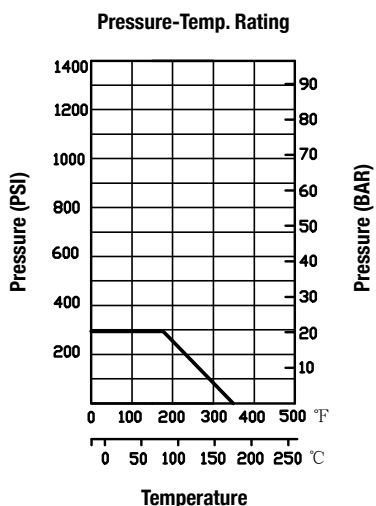


- ASTM A351 CF8M 316 Stainless Steel Body, Bonnet and Wedge.
- 316 Stainless Steel Stem and Trim. Ductile Iron painted Handwheel.
- PTFE Gland Packing and Bonnet Seal. Bronze Bush.
- Bolted Bonnet. Outside Screw and Yoke. Rising Stem. Solid Wedge.
- Face to Face dimensions in accordance with ANSI B16.10
- Class 150 pressure rated.
- -20 / +180 deg C Temp rated.
- Flanged ANSI 150 end connections.
- CE marked in accordance with the PED 2014/68/EU (from 1.1/2").

Design Standard – API 600

Test Standard – API 598

Available size range: 1/2" - 6"



Item	Part	Material	Qty.
1	Body	CF8M	1
2	Disc	CF8M	1
3	Bonnet Bolt	SUS304	1
4	Bonnet Nut	SUS304	1
5	Bonnet	CF8M	1
6	Hinge Pin	SUS304	1
7	Eye Bolt	SUS304	1
8	Gland	SCS13	1
9	Eye Nut	SUS304	1
10	Hand Wheel	FCD400	1
11	Nut	BRONZE	1
12	Stem	SUS316	1
13	Name Plate	SUS304	1
14	Spring	BRONZE	1
15	Yoke Sleeve	BRONZE	1
16	Spring Washers	SUS304	1
17	Gland Packing	PTFE	1
18	Packing	PTFE	1
19	Gasket	PTFE	

SIZE	d	L	H	W	D	C	G	f	T	N-øM
1/2"	15	108	182	120	89	60.5	35	1.6	12.1	4-ø16
3/4"	20	117	195	120	98	70	43	1.6	12.1	4-ø16
1"	25	127	237	120	108	79.5	51	1.6	12.1	4-ø16
1-1/4"	32	140	294	200	117	89.5	64	1.6	12.7	4-ø16
1-1/2"	40	165	294	200	127	98.5	73	1.6	14.3	4-ø16
2"	50	178	335	200	152	120.5	92	1.6	15.9	4-ø19
2-1/2"	65	190	393	200	178	139.5	105	1.6	17.5	4-ø19
3"	80	203	467	250	190	152.5	127	1.6	19.1	4-ø19
4"	100	229	549	250	229	190.5	157	1.6	23.9	8-ø19
6"	150	267	743	300	279	241.5	216	1.6	25.4	8-ø22